

Case studies: How have culture and creativity been supporting people in health, care and other institutions during the Covid-19 pandemic?

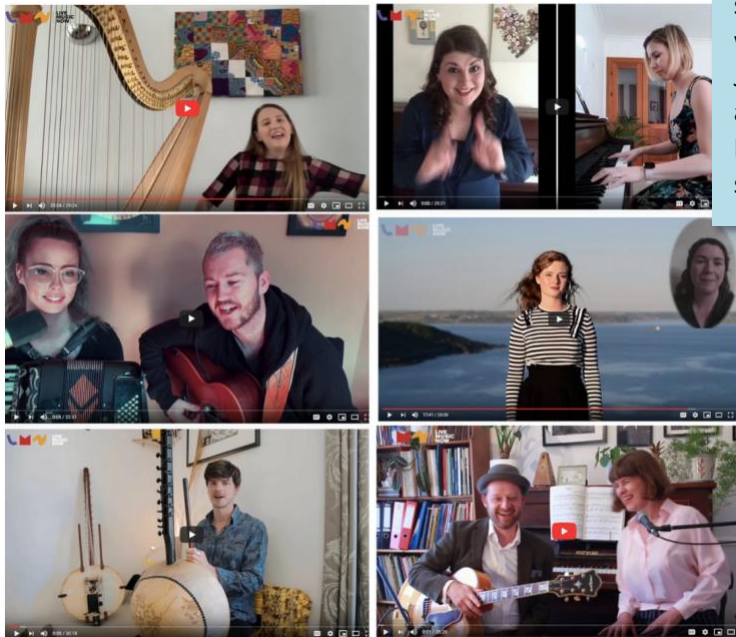
Project: LMNOnline

Organisation: Live Music Now

Region: England, Wales and Northern Ireland

Designed for: Care homes

“I just wanted to send a message to thank everyone at Live Music Now so much for the wonderful afternoon we had today ... It was the best thing that has happened to us in a very long time! It was an absolute breath of fresh air to see them and listen to them sing/play. The residents and staff loved every second! I’m so impressed with how well it all works on zoom. Because we know Emily and James so well already it felt really natural and as if they were actually in the room with us! ... It’s such a wonderful thing to watch someone’s day being made like that!”



Live Music Now Musicians taking part in LMNOnline

Introduction

Live Music Now (LMN) is a UK based charity with a vision of a world where the transformative benefits of live music are accessible to all. Its core purpose is to improve the health and wellbeing of vulnerable and disadvantaged groups through evidence-based music programmes in care homes, special schools, and a range of other community and healthcare settings.

Our specialist training programmes are delivered by leading practitioners, providing young musicians with skills and employment at the start of their professional careers, unlocking new potential as well as giving them the tools, confidence and opportunity to make genuinely valuable contributions to society.

Live Music Now Online is a programme to ensure that people living and working in care homes and settings for older people continue to be able to access live music despite the challenges and restrictions of the Covid 19 Pandemic.

This includes live music concerts both pre-recorded and live streamed, interactive online music activities, videos helping care workers to lead music, outdoor concerts and 1:1 concerts for people shielding at home. These feature early career professional musicians who have been carefully selected and cover a range of genres, including Western Classical, Folk, Jazz, Show Tunes, Pop, Singer Songwriters, Beatboxers and International music.

Funders

Wide range of funders including the Rayne Foundation

Partners

We work with many of care settings around the country. Our programme has been promoted by sector partners such as the National Care Forum, Care England and NAPA.

Who is it for?

Older people living in care settings and using day care settings , and care workers in those settings, as well as older people shielding at home and their carers

Are these people you have worked with before, or new participants?

Both

How many people took/are taking part?

Thousands.

Where is it happening?

England, Wales and Northern Ireland. (There is separate organisation Live Music Now Scotland.)

For how long has it been happening?

April 2020 and ongoing

What were/are the main outputs?

We have created

- A Library of free live music concerts available on our website and on YouTube
- How to films supporting staff to make music with older people also available as above
- A series of live streamed concerts going out weekly every Wednesdays on Facebook, starting on 28 Oct
- A range of bespoke interactive residencies with older people in care homes
- Live outdoor concerts
- 1:1 bespoke shielding concerts

What outcomes were/are you aiming for?

Improved wellbeing of people using, living and working in care settings for older people, including those living with dementia to help them recover from and face the challenges of the Covid 19 pandemic.

Have you adapted existing work to make this happen? If so, how?

Yes. We have taken the activity we previously did in person live in care and community settings with older people, and put it online. In order to do that we have had to train and support musicians to work in this new way, and produce and create a lot of new content , as well as guidance to support use and engagement.

Does your work support people who identify with one or more of the protected characteristics¹?

Yes, age and disability

¹Protected characteristics are age, disability, gender reassignment, marriage and civil partnership, pregnancy and maternity, race, religion or belief, sex, sexual orientation (Equalities Act 2010).

Evaluation & Feedback

We are seeking formal and informal evaluation feedback on our programme.

“I just wanted to send a message to thank everyone at Live Music Now so much for the wonderful afternoon we had today with Emily and James! It was the best thing that has happened to us in a very long time! It was an absolute breath of fresh air to see them and listen to them sing/play. The residents and staff loved every second! I’m so impressed with how well it all works on zoom. Because we know Emily and James so well already it felt really natural and as if they were actually in the room with us! We were able to reach lots of residents using 3 tablets, even though many of the residents are still in their own rooms. The resident I was sitting with during the afternoon kept saying ‘I love this one!’ as the music started. It’s such a wonderful thing to watch someone’s day being made like that!” (Sarah Withers Activities Coordinator Dalemead Care Home)

What is your own impression of how it has worked? What have been the challenges and successes for you?

Challenges

- Rapidly converting from a live delivery to an online delivery organisation
- Learning and navigating the process of commissioning and producing online live and pre-recorded music content - tech, capacity, skills, knowledge, copyright etc
- Wellbeing, capacity and resilience of staff and musicians
- Staff being ill and furloughed
- Uncertainty of personal and national contexts - lockdown, schools shut, childcare, isolation, bereavements, fear around what is safe when will it be possible to go back to live work
- Musicians who usually play in ensembles being separated
- Doing everything remotely

Successes

- Created a lot of very good work very quickly
- High quality content
- Team pulled together and made it work
- Team learnt a lot of new skills and adapted to new ways of working
- We’ve paid musicians to make music at a time when a lot of their work has gone away
- We’ve provided live music to people who wouldn’t otherwise access it

Are you reaching more people/fewer people/different people?

Probably reaching more people but hard to know how many people are watching the pre-recorded materials.

What would you say has made this project possible?

Hard work, commitment and dedication of all the people involved.

What would have made it easier?

Hard to say.

Further information

Pre-recorded concerts:

<https://www.livemusicnow.org.uk/lmnonlinecare>

Live streamed concerts

<https://www.facebook.com/livemusicnow/live>